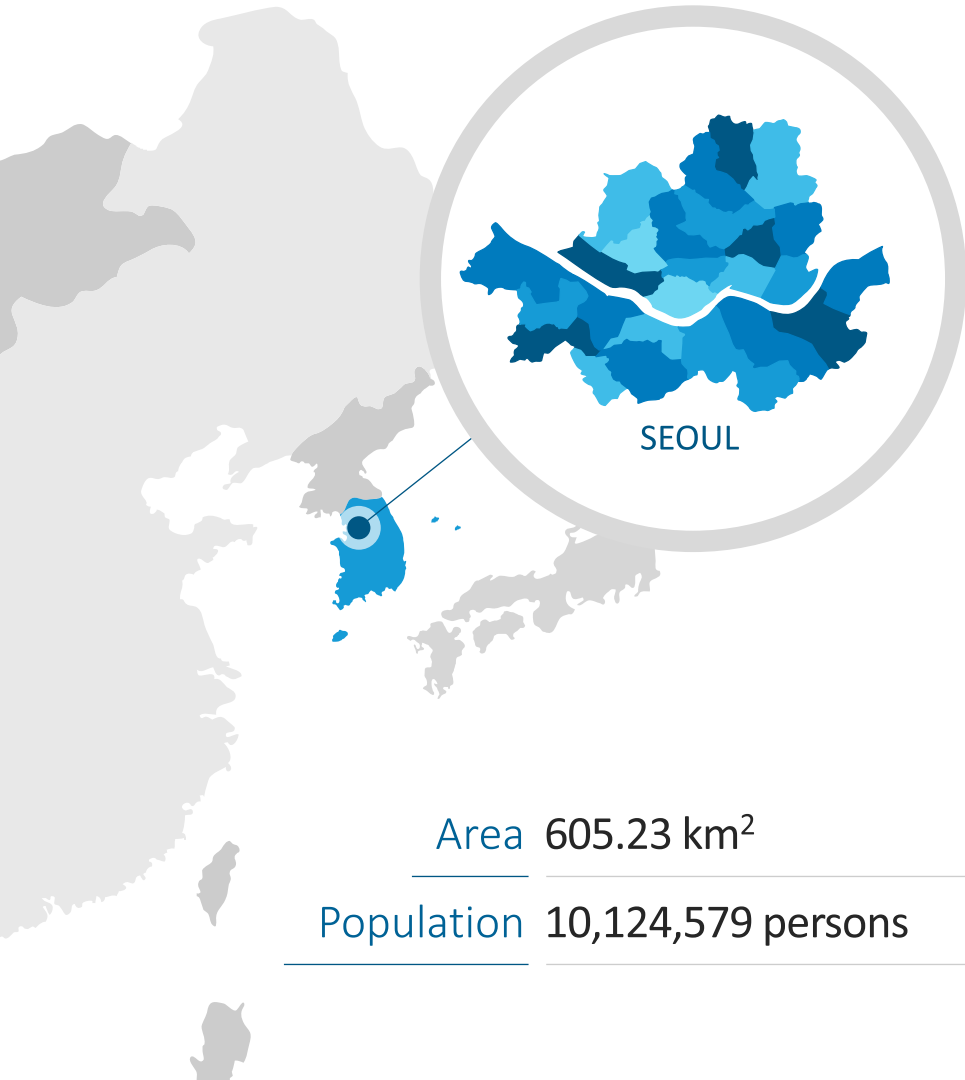




SMART  
SAFETY  
CITY  
SEOUL

# Introduction of Seoul



Area 605.23 km<sup>2</sup>

Population 10,124,579 persons

## Status on Infrastructures

Road 

Length : 8,243km Area : 85.1Km<sup>2</sup>

Road Facility 

1160 facilities (503 bridges, 44 tunnels)

Subway 

10 lines/328 stations 351.5km/7,240,000 passengers per day

Buildings 

610,000 units

# Seoul's Past and Present



1950-1953

GNP of 82 USD with the outbreak of  
the Korean War

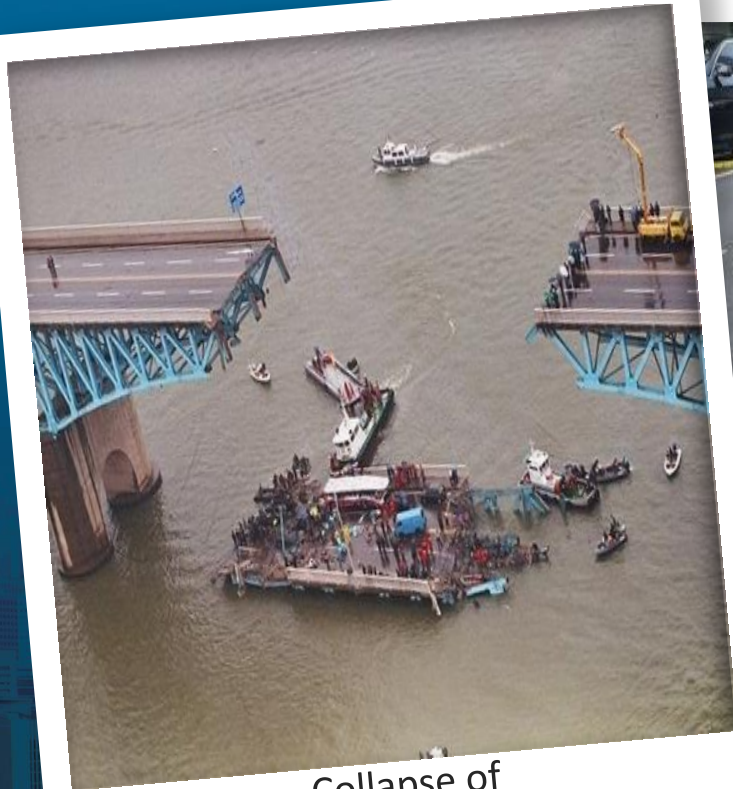
50  
years



2019

Smart and sustainable city with  
a population of 10 million people

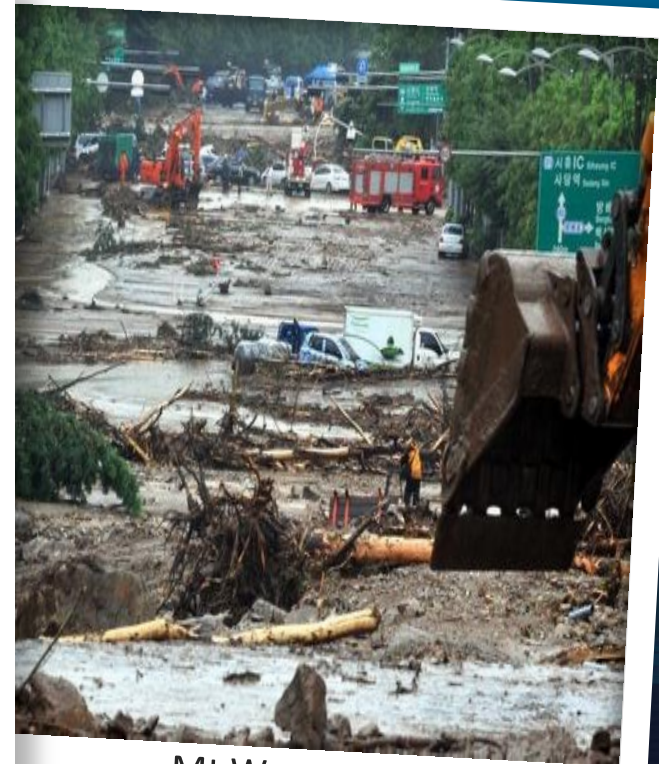
# Examples of Disaster



Collapse of  
Seongsu Bridge (1994.10)



Sinkholes (2010~)



Mt.Woomyeon  
Landslide (2011.7)

# Smart Safety City Seoul

Take Disaster Prevention Measures Through IoT and Big-data Analysis

## Big-data Analysis of Infrastructures

Smart Infrastructure  
Management



Smart Flood  
Prevention

Using Smart Technology to  
Enhance Safety



# Big-data Analysis of Aging Infrastructure

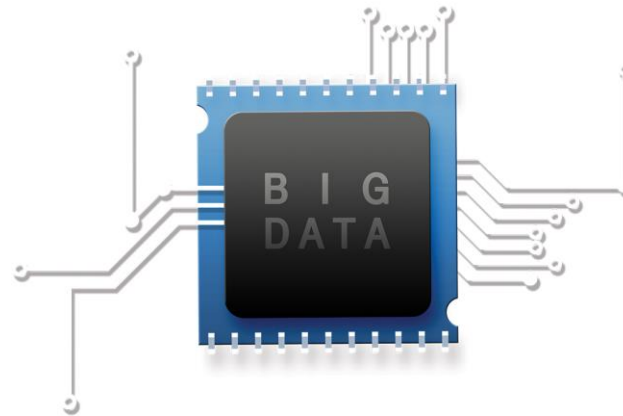
## Identify Risk Factors & Ensure Resilient and Sustainable Urban Infrastructure

### Data Collection



Collect data to analyze functionality, maintenance cost, and remaining life of the facility

### Data Analysis



Estimate the best time for construction, renovation, and general maintenance and the costs

### Comprehensive Management

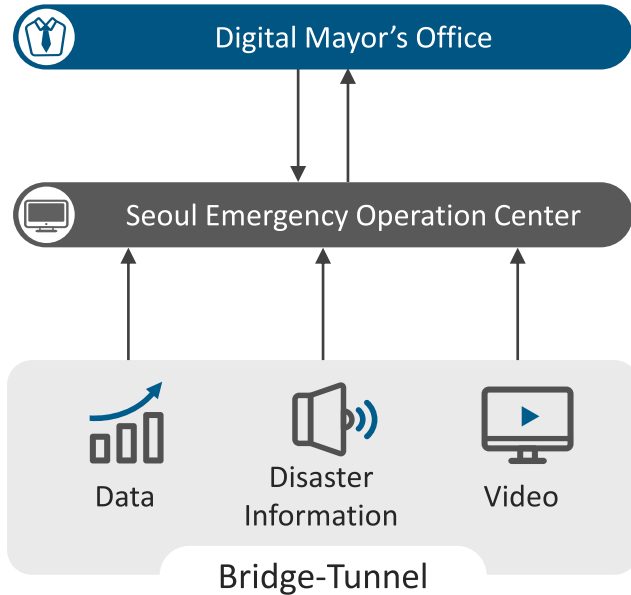


Ensure the effective distribution of resources through mid-to-long term management plans

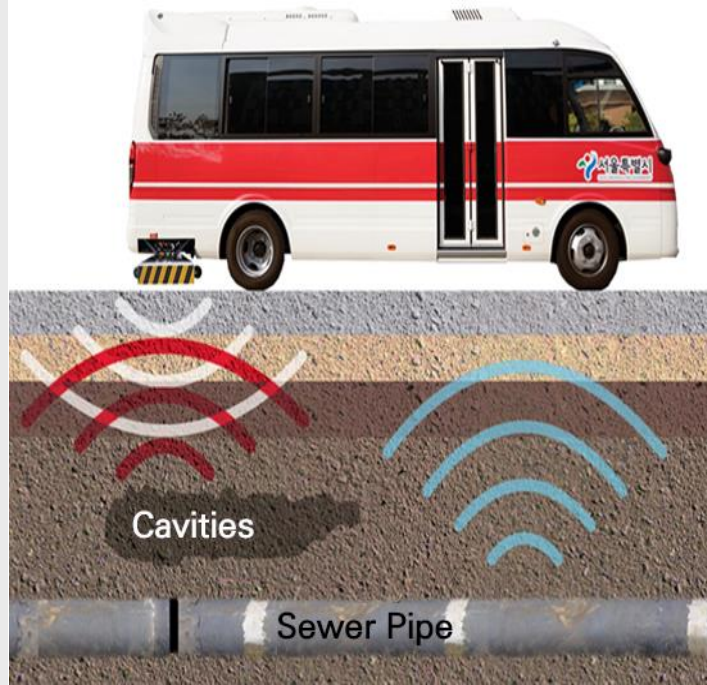
# Smart Infrastructure

## Manage Road Facilities Effectively Through AI-based Smart Technology

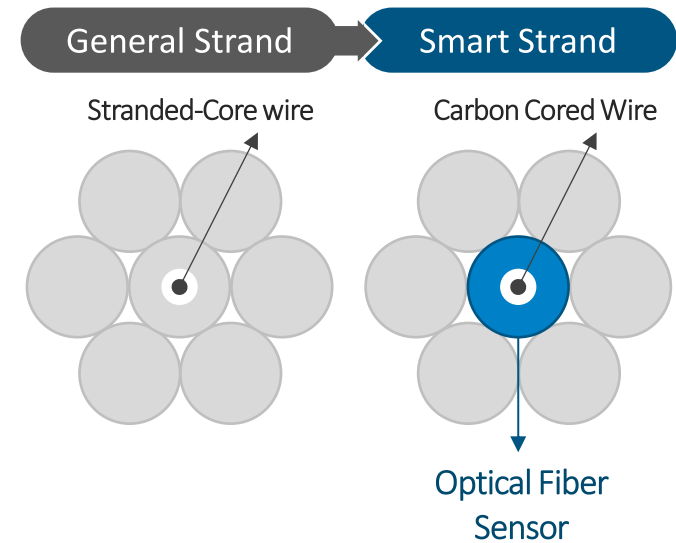
### Bridge & Tunnel Monitoring Center



### AI-based Inspection of Underground Cavities

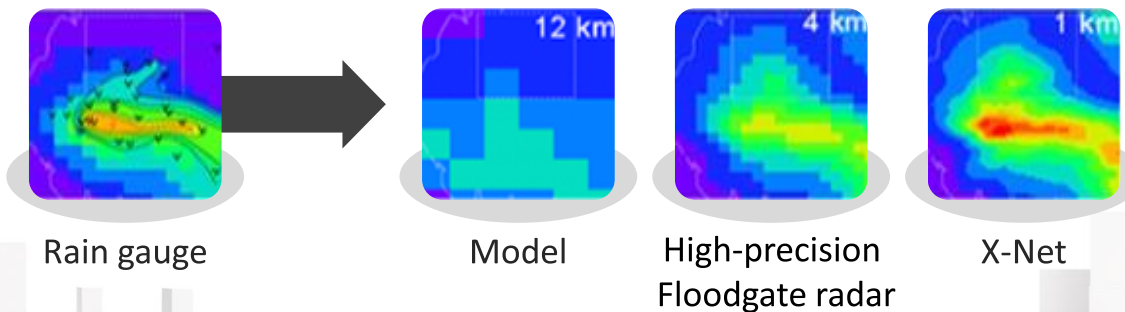
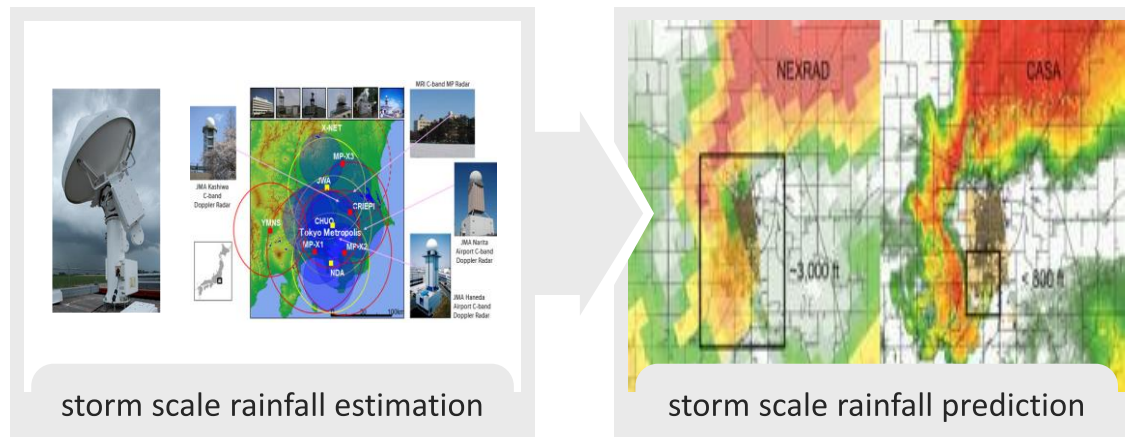


### Remote Tendon Monitoring System

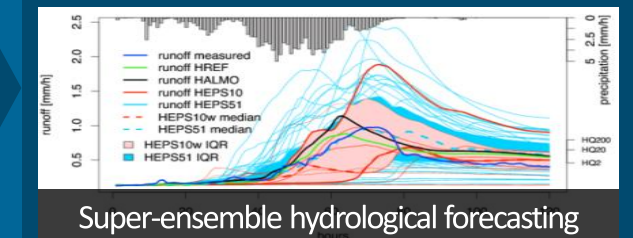
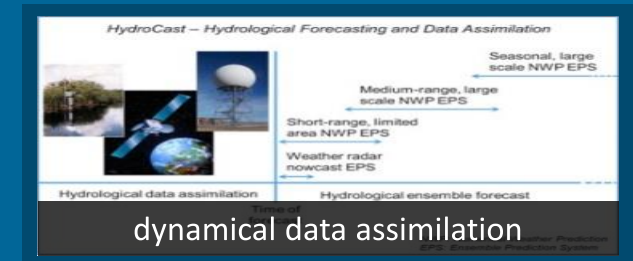


# Smart Flood Prevention System

Prepare For Heavy Rainfall & Minimize Flood Damage Through Sewage Treatment



multi-scale  
Heavy rain





Seoul will continue  
to work with cities  
around the world  
to make a safer place  
for all.

